

# Michigan: EDI Onboarding

Behavioral Health, MI Health Link, MI Choice, Medicaid  
Managed-Care Home Healthcare Services

August 2024

The content contained herein ("Confidential Information") are the confidential property of HHAeXchange and may not be copied or distributed outside the HHAeXchange organization without the express written consent of HHAeXchange. Distribution of this document or disclosure of any Confidential Information set forth herein to any party other than the intended recipient(s) of this presentation is expressly prohibited.





# EDI Onboarding : Agenda


- Map To EVV Mastery: EDI Onboarding
- Services in scope
- How to initiate integration
- Data Exchange Workflow
- Access to HHAeXchange
- HHAeXchange Demo
- Key Takeaways
- Next Steps
- Questions?



# THE MAP TO **EVV MASTERY**


HHAeXchange is here to guide you  
along your EVV Onboarding eXpedition

# Provider Milestones



## Beginnings Base Camp

- Get Ready for EVV Webinar
  - ✓ Register and Attend
- Onboarding Form
  - ✓ Submitted
- Information Sessions
  - ✓ Register and Attend



## Get Moving Mountain

- Milestone 1: Portal Access (*All Providers*)
- Milestone: EDI Onboarding**
- Milestone 2: Payer Contracts (*All Providers*)



## EVV Foundations Forest

- Milestone 3: EVV Setup and Readiness
- Provider Go Live
- Milestone 4: EVV Collection and Management

# > Key Takeaways



Throughout today's training presentation, you will see this icon. It highlights important information, which we will summarize as key takeaways at the end of today's training.



# Services in Scope



# Program and Service Codes that require EVV



[Beneficiaries, Clients & Participants - FAQs \(michigan.gov\)](https://michigan.gov)

| Program           | Program Code<br><small>*Modifiers are included but not listed</small> | Service Description                                      |
|-------------------|---|--|
| Behavioral Health | H2015   | Community Living Supports (CLS)                          |
|                   | T1005   | Respite Care, per 15 minutes*                            |
| MI Choice         | H2015   | Comprehensive Community Support Services, per 15 minutes |
|                   | S5150   | Unskilled Respite Care, not Hospice, per 15 minutes      |
| MI Health Link    | H2015   | Comprehensive Community Support Services, per 15 minutes |
|                   | S5150   | Unskilled Respite Care, not Hospice, per 15 minutes      |
|                   | T1019   | Personal Care Services (PCS), per 15 minutes             |
| CHCP              | G0151   | Physical Therapy   |
|                   | G0152   | Occupational Therapy                                     |
|                   | G0153   | Speech/Language Therapy                                  |
|                   | G0156   | Home Health Aide   |
|                   | G0299   | Skilled Nursing Services, RN                             |
|                   | G0300   | Skilled Nursing Services, LPN                            |



# Initiating Integration



# Get Moving Mountain

## How to Initiate Integration

### Milestone: EDI Onboarding

- Review Business Requirements document and EVV API Specification
- Complete MI Attestation with vendor and provider contact included. *(Please utilize QR Code or link for attestation form.)*



**EDI Testing:** New vendors must complete testing and create a ticket with Provider EDI Integrations.





# MI Attestation Demo



# Get Moving Mountain

## How to Initiate Integration

What if I don't receive a ticket number within 48 hours of submitting Attestation?

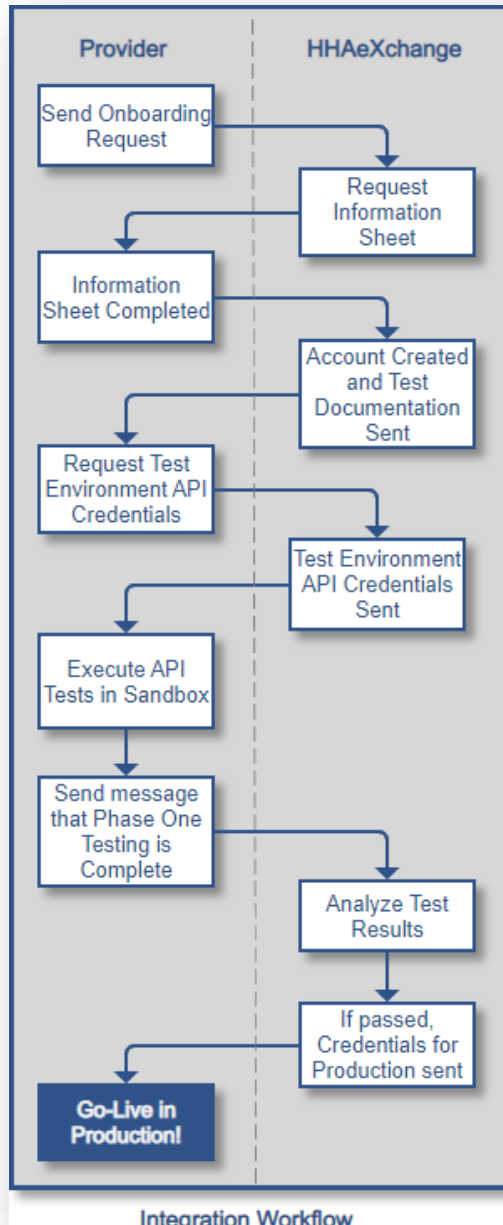


Contact the HHAX Provider Integration team via the Client Support Portal: [EDI support](#)

Provide the following information:

- Provider legal name
- Provider 9-digit Federal Tax ID Number

# Prepare for EVV Integration Testing



- Review the HHAX Testing Process document.
  - HHAeXchange provides this document once access to the HHAeXchange environment is confirmed by the provider.
- HHAeXchange provides test member demographic data to providers to utilize during end-to-end testing.
- Message error codes begin on page 47 of the HHAX Michigan Technical Specifications resource.
  - Providers contact Provider Integration team for assistance through the Client Support Portal: [Provider EDI integrations](#)



# Data Exchange Workflow

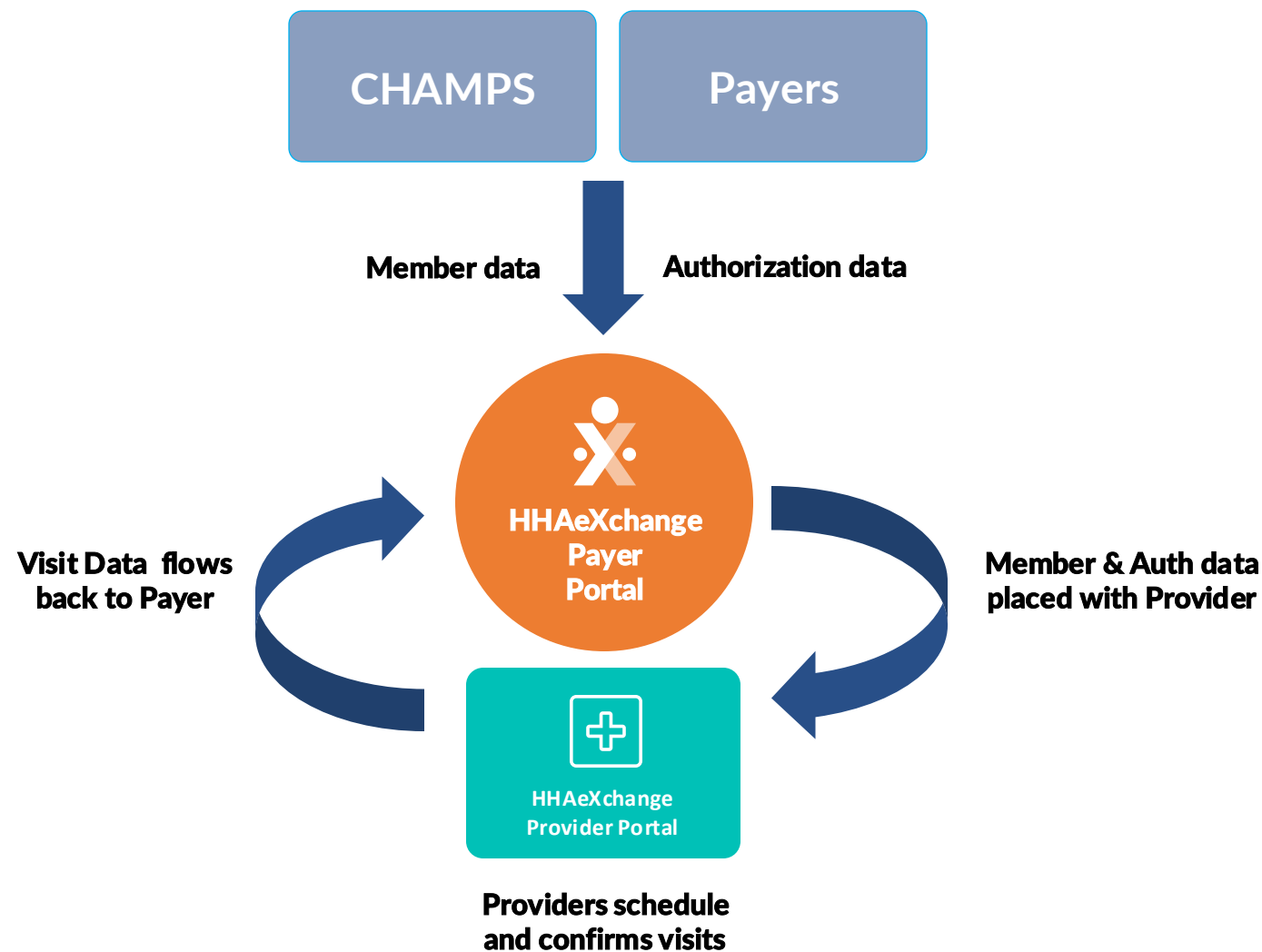


# Electronic Visit Verification (EVV) Data Flow



## Here's what you need to know.

- CHAMPS system is the source of truth for Member data.
- Payer data is the source of truth for Authorizations.
- Providers will receive Member and Authorization Data directly into their HHAeXchange Provider Portal.
- EDI Providers import visit data.
- MI Payer Portal (accessed by waiver agencies/programs) will receive visit data from provider agencies for EVV compliance.



# Data Transmission Details



## Transmission Frequency and Limits

- Send visit data in near real time.
- Send data as it is added, changed, and/or deleted in the third-party EVV system.
- Data that is unchanged should not be resent to HHAX.
- HHAX provides transaction statuses on a separate Application programming Interface (API) call that is initiated by the third-party EVV system.
- HHAX allows a maximum of five (5) calls per second per consumer.

# Data Transmission Details



## Record Processing Workflow and Endpoints

- There are two types of messages provided to HHAX by the third-party provider or EVV vendor;
  - (1) caregiver demographic data and
  - (2) visit information
- Note that caregiver data is to be sent to HHAX first as a record is required to HHAX for visit data to load successfully. The provider and/or EVV vendor provides data to HHAX in JavaScript Object Notation (JSON) format only.
- Caregiver records are required to be sent individually to the API.
- Visit Data can be batched; up to 100 records can be sent per request.



# Access to HHAeXchange

# Milestone 1 Recap



## Milestone 1: Portal Access

- [Recording](#) | [Slides](#)

## [Knowledge Base: Training Videos](#)





- [How to Log Into HHAeXchange](#)
- [How to Reset a HHAeXchange Password](#)
- [How to Create a New User](#)
- [How to Run list of Caregiver Report](#)



# Key Takeaways

# Key Takeaways



-  Complete MI Attestation with vendor and provider contact included.
-  Contact the HHAX Provider Integration team via the Client Support Portal: EDI support
-  The person who completed the EVV onboarding form will receive the initial login credentials.
-  Caregiver information will be loaded into HHAX when the visit is transferred from the vendor system.

# EDI Integration Checklist




- ☒ [Complete the HHAeXchange Provider Onboarding Form](#)
- ☒ [Complete the Michigan Third Party EVV Attestation](#)
- ☒ Attend an [Informational Session Recording](#) | [Slides](#)
- ☒ Attend an EDI Onboarding Webinar
- ☐ Access HHAeXchange Provider Portal
- ☐ Attend training Milestone 2
- ☐ Receive MI payer contracts and data
- ☐ Integration completed by EDI Team
- ☐ **Go-Live: 9/3/2024**



# Next Steps

# > Next Steps: Provider Milestones



## Beginnings Base Camp

- Get Ready for EVV Webinar
  - ✓ Register and Attend
- Onboarding Form
  - ✓ Submitted
- Information Sessions
  - ✓ Register and Attend



## Get Moving Mountain

- Milestone 1: Portal Access (*All Providers*)
- Milestone: EDI Onboarding : Aug 6
- Milestone 2: Payer Contracts (*All Providers*) : Aug 13



## EVV Foundations Forest

- Milestone 3: EVV Setup and Readiness
- Provider Go Live
- Milestone 4: EVV Collection and Management



# Get Moving Mountain

## Receive and Review Payer Contracts & Data

### Milestone 2: Payer Contracts *(All Providers)*

- Register for Milestone 2 training
- Review Payer Contracts linked & Next Steps Email.
- Search and update payer contracts.
- View and Manage Member & Auth Data.
- Attend Milestone 2 Training Webinar: Aug 13



# Get Moving Mountain

## Milestone 2: Contract Management

### How Do I Register?

- Use the QR code on this slide
- Complete the Zoom Registration Form
- Receive an email confirmation link to join the zoom webinar.

### Who Should Attend Milestone 2 ?

- All Providers
- Agency Administration

### What if I'm Unable to Attend?

- You will receive a follow up email with recording and next steps.



# Provider Resources



The State Info Hub will be your primary source of information throughout this implementation to stay up to date on all information and dates.



**HHAeXchange  
Michigan Info Hub**  
[www.hhaexchange.com/Michigan](http://www.hhaexchange.com/Michigan)



**MDHHS  
EVV Website**  
[www.Michigan.gov/EVV](http://www.Michigan.gov/EVV)



# Questions?



MI Attestation  
Form



Register for  
Milestone 2